



Model: ST12 (12) Drum Heating Tunnel, Steam

LEWCO drum tunnels provide a means to heat individual drums that are not palletized, while also accommodating "first-in, first-out" product flow. These models also offer the potential for automated drum handling and integration into other processes. All models feature our signature all-welded steel, heavy-duty construction and simple, user-friendly controls.

Capacity

- (12) 55 gallon drums
- 675 lbs. per drum

Construction/ Features

- All welded, 1/8" steel shell
- Insulation: 3" x 6# mineral wool
- Heavy-duty, rigid frame construction and a top mounted heater box saves floor space and provide high convection airflow for faster heat-up times.
- Pneumatic guillotine doors on both ends.

Conveyor

- Gravity roller conveyor set on incline to efficiently convey drums through tunnel.
- 2 1/2" diameter x 11 ga. rollers with sealed bearings on 4 1/2" roller centers.
- Proprietary escapement device allows discharge of (1) drum at a time.

Heating Medium

- Steam, 5-200 PSIG

Heat Exchanger

- 124,000 BTU's per hour at 150 PSIG

Control Options

- Electronic process and redundant high-limit controllers with modulating control valve housed in a IP65 enclosure with full voltage lockable disconnect
- Non-electronic, self-acting temperature controller, limited to 150 psig, available in the following ranges:
 - 125°-212°F, 1/2" valve
 - 158°-300°F, 1/2" valve

Circulation Fan

- Standard: 3,500 CFM, TEFC motor with motor starter
- Optional: 3,500 CFM, explosion-proof motor with motor starter

Quality Assurance

- Each unit comes complete with a (3) year warranty and is fully assembled, wired, and tested prior to shipment

Utility Requirements

- Compressed Air: 60 PSI
- Electric: 480/3/60
- Optional Electric:
 - 208/3/60
 - 240/3/60
 - 380/3/50
 - 575/3/60

Spill Containment

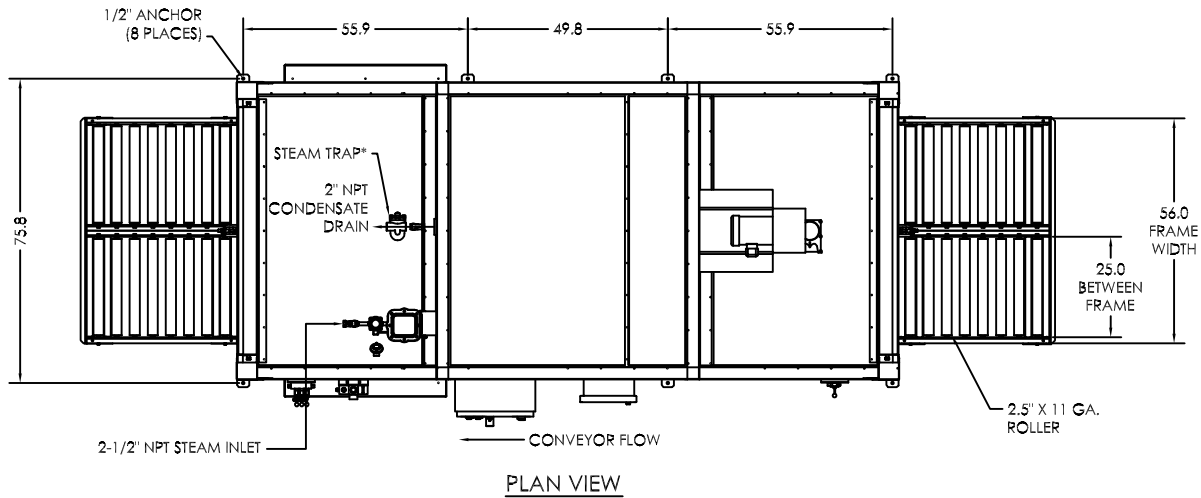
- 81 gallon capacity
- Sump drain, 1" NPT

Finish

- Standard: Blue or gray alkyd oil base paint
- Optional: Premium finish for corrosive areas

Additional Options

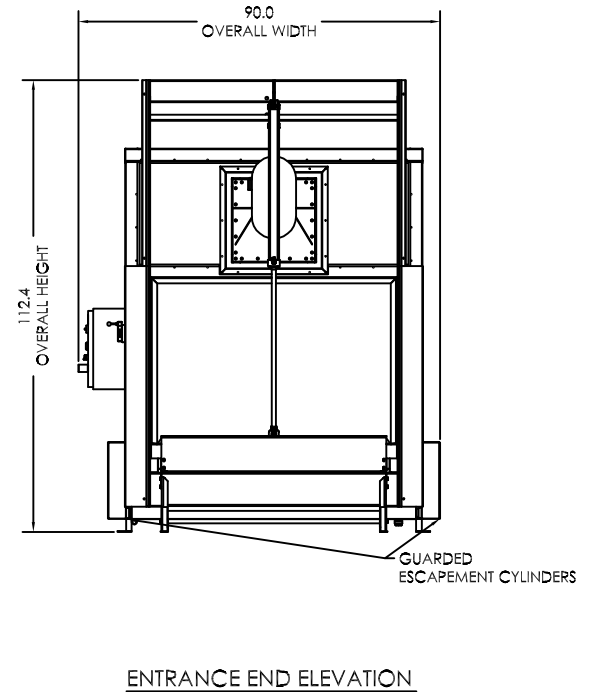
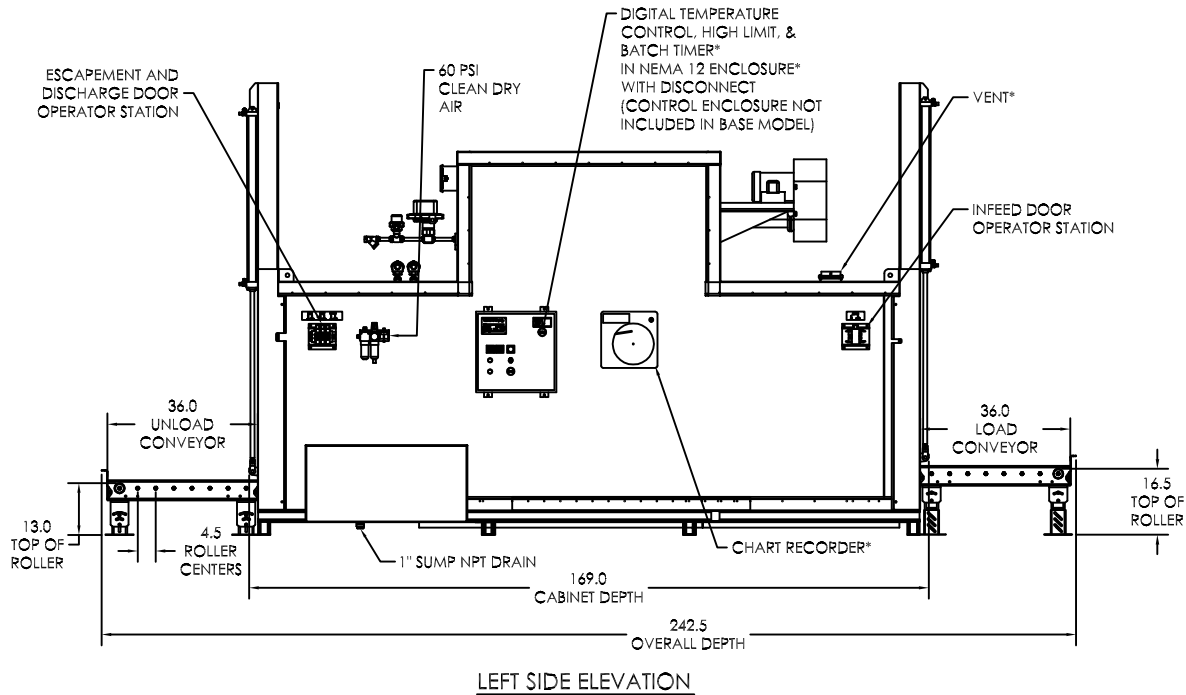
- Steam trap
- 5" exhaust vent with damper
- A variety of powered and unpowered standard conveyors are available to move drums through processing.



- 1.) CAPACITIES
 MAXIMUM TEMPERATURE: 300°F
 DRUM CAPACITY: (12) 55 GAL DRUMS @ 675 LBS. PER DRUM
 HEAT CAPACITY: 124,000 BTU/HR
 CIRCULATING FAN: 3500 CFM, 2 HP
 SPILL CONTAINMENT SUMP: 81 GAL
- 2.) UTILITY REQUIREMENTS
 ELECTRIC: 480/3/60*
 COMPRESSED AIR: 60 PSI
 HEAT EXCHANGER PRESSURE RATING: 150 PSIG @ 366°F
- 3.) MATERIALS OF CONSTRUCTION
 INTERIOR COVERS: 16 GA. ALUMINIZED
 EXTERIOR COVERS: 18 GA. COLD ROLLED
 CONVEYOR RAILS: 8 GA. COLD ROLLED
 BASE: C3@4.1# STRUCTURAL CHANNEL
 INSULATION: 3" x 6# DENSITY MINERAL WOOL

*DESIGNATES OPTIONAL FEATURE

CONSULT FACTORY FOR ADDITIONAL OPTIONS NOT SHOWN



MODEL: ST12
 DESCRIPTION: DRUM HEATING TUNNEL
 DRAWING: ST12 SALES

THIS DRAWING IS CONFIDENTIAL AND MUST NOT BE COPIED, REPRODUCED OR USED FOR ANY PURPOSE WITHOUT THE WRITTEN CONSENT OF LEWCO, INC. ALL RIGHTS RESERVED

LEWCO, INC. IS COMMITTED TO CONTINUOUS IMPROVEMENT AND RESERVES THE RIGHT TO CHANGE DESIGNS AND SPECIFICATIONS WITHOUT NOTICE.

DATE 12/12/13
 REV 000
 PAGE 1 OF 1

