



Model: ET12

### (12) Drum Heating Tunnel, Electric

LEWCO drum tunnels provide a means to heat individual drums that are not palletized, while also accommodating "first-in, first-out" product flow. These models also offer the potential for automated drum handling and integration into other processes. All models feature our signature all-welded steel, heavy-duty construction and simple, user-friendly controls. Please note that electric drum heating tunnels are not suitable for heating flammable or combustible materials.

#### Capacity

- (12) 55 gallon drums
- 675 lbs. per drum

#### Construction/ Features

- All welded, 1/8" steel shell
- Insulation: 3" x 6# mineral wool
- Heavy-duty, rigid frame construction and a top mounted heater box save workspace and provide high convection airflow for faster heat-up times.
- Pneumatic guillotine doors on both ends.

#### Conveyor

- Gravity roller set on incline to efficiently convey drums through tunnel
- 2 1/2" diameter x 11 ga. rollers with sealed bearings on 4 1/2" roller centers.
- Proprietary escapement device allows discharge of (1) drum at a time.

#### Heating Medium

- Electric, low watt density, Incoloy® heaters provide years of trouble-free service

#### Heat Capacity

- 36 kW

#### Controls

- Standard: Electronic process and redundant high-limit controllers housed in a NEMA 12 enclosure with full voltage lockable disconnect
- Optional:
  - Door switch
  - Batch timer
  - Single pen chart recorder

#### Quality Assurance

- Each unit comes complete with a (3) year warranty and is fully assembled, wired, and tested prior to shipment

#### Circulation Fan

- 3,500 CFM, TEFC motor with motor starter

#### Utility Requirements

- Compressed Air: 60 PSI
- Electric: 480/3/60
- Optional voltages available

#### Spill Containment

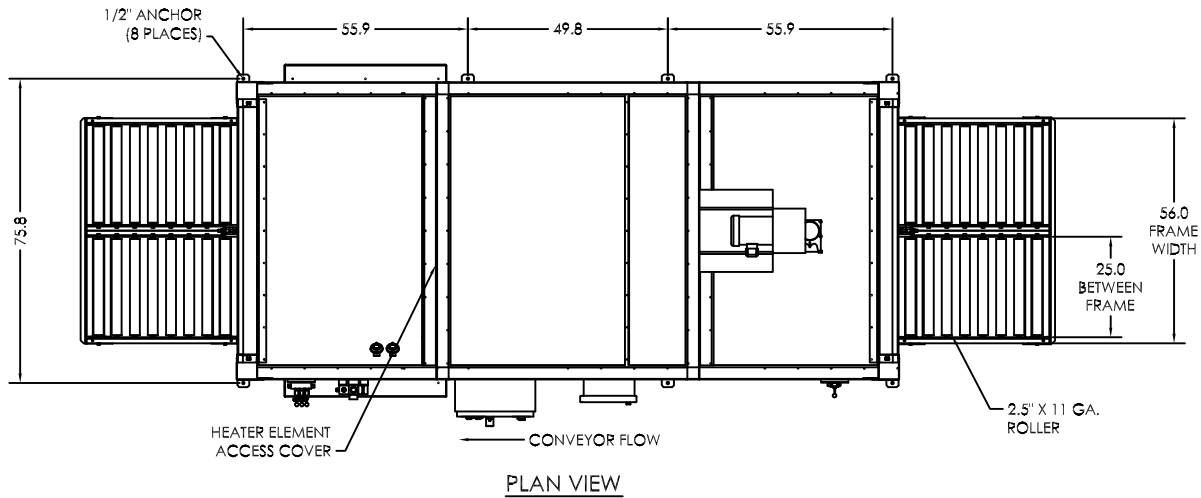
- 81 gallon capacity
- Sump drain, 1" NPT

#### Finish

- Standard: Blue or gray alkyd oil base paint
- Optional: Premium finish for corrosive environments

#### Additional Options

- 5" exhaust vent with damper
- A variety of powered and unpowered standard conveyors are available to move drums through processing.



1.) ELECTRIC DRUM HEATING CABINETS ARE NOT SUITABLE FOR USE IN HAZARDOUS AREAS AND SHOULD NEVER BE USED TO HEAT FLAMMABLE OR COMBUSTIBLE MATERIALS

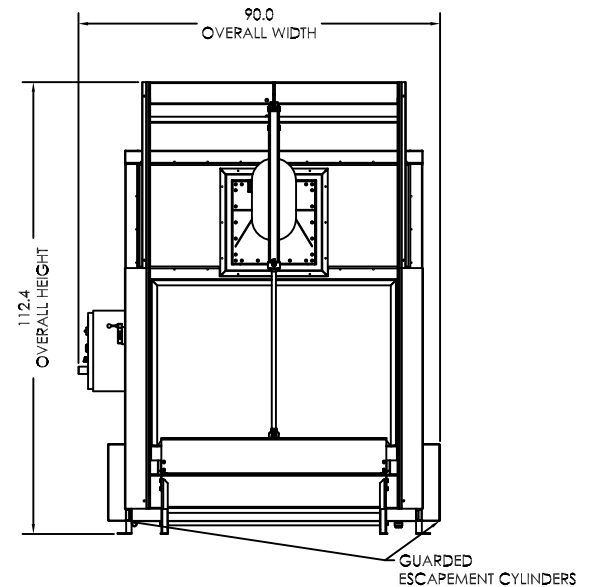
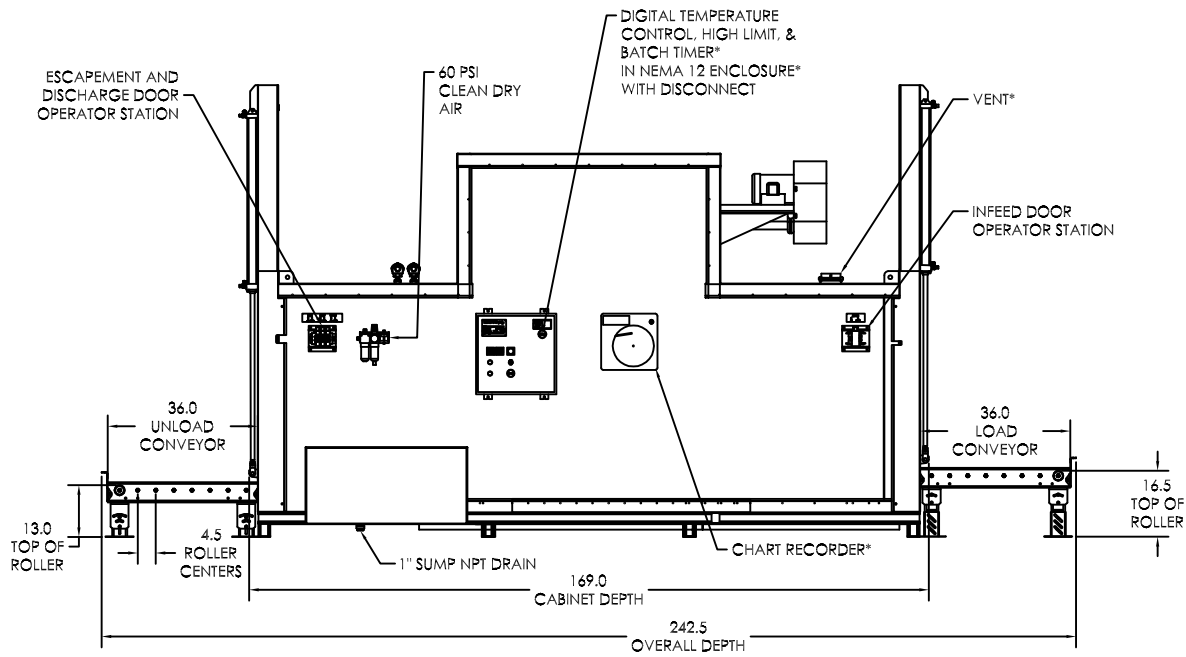
2.) CAPACITIES  
 MAXIMUM TEMPERATURE: 300°F  
 DRUM CAPACITY: (12) 55 GAL DRUMS @ 675 LBS. PER DRUM  
 HEAT CAPACITY: 36 kW  
 CIRCULATING FAN: 3500 CFM, 2 HP  
 SPILL CONTAINMENT SUMP: 81 GAL

3.) UTILITY REQUIREMENTS  
 ELECTRIC: 480/3/60\*  
 COMPRESSED AIR: 60 PSI

4.) MATERIALS OF CONSTRUCTION  
 INTERIOR COVERS: 16 GA. ALUMINIZED  
 EXTERIOR COVERS: 18 GA. COLD ROLLED  
 CONVEYOR RAILS: 8 GA. COLD ROLLED  
 BASE: C3@4.1# STRUCTURAL CHANNEL  
 INSULATION: 3" x 6# DENSITY MINERAL WOOL

\*DESIGNATES OPTIONAL FEATURE

CONSULT FACTORY FOR ADDITIONAL OPTIONS NOT SHOWN



MODEL: ET12  
 DESCRIPTION: DRUM HEATING TUNNEL  
 DRAWING: ET12 SALES

THIS DRAWING IS CONFIDENTIAL AND MUST NOT BE COPIED, REPRODUCED OR USED FOR ANY PURPOSE WITHOUT THE WRITTEN CONSENT OF LEWCO, INC. ALL RIGHTS RESERVED

LEWCO, INC. IS COMMITTED TO CONTINUOUS IMPROVEMENT AND RESERVES THE RIGHT TO CHANGE DESIGNS AND SPECIFICATIONS WITHOUT NOTICE.

DATE 12/12/13  
 REV 000  
 PAGE 1 OF 1

