



Model: ET20

(20) Drum Heating Tunnel, Electric

LEWCO drum tunnels provide a means to heat individual drums that are not palletized, while also accommodating "first-in, first-out" product flow. These models also offer the potential for automated drum handling and integration into other processes. All models feature our signature all-welded steel, heavy-duty construction and simple, user-friendly controls. Please note that electric drum heating tunnels are not suitable for heating flammable or combustible materials.

Capacity

- (20) 55 gallon drums
- 675 lbs. per drum

Construction/ Features

- All welded, 1/8" steel shell
- Insulation: 3" x 6# mineral wool
- Heavy-duty, rigid frame construction and a top mounted heater box save workspace and provide high convection airflow for faster heat-up times.
- Pneumatic guillotine doors on both ends.

Conveyor

- Gravity roller set on incline to efficiently convey drums through tunnel
- 2 1/2" diameter x 11 ga. rollers with sealed bearings on 4 1/2" roller centers.
- Proprietary escapement device allows discharge of (1) drum at a time.

Heating Medium

- Electric, low watt density, Incoloy® heaters provide years of trouble-free service

Heat Capacity

- 36 kW

Controls

- Standard: Electronic process and redundant high-limit controllers housed in a NEMA 12 enclosure with full voltage lockable disconnect
- Optional:
 - Door switch
 - Batch timer
 - Single pen chart recorder

Quality Assurance

- Each unit comes complete with a (3) year warranty and is fully assembled, wired, and tested prior to shipment

Circulation Fan

- 3,500 CFM, TEFC motor with motor starter

Utility Requirements

- Compressed Air: 60 PSI
- Electric: 480/3/60
- Optional voltages available

Spill Containment

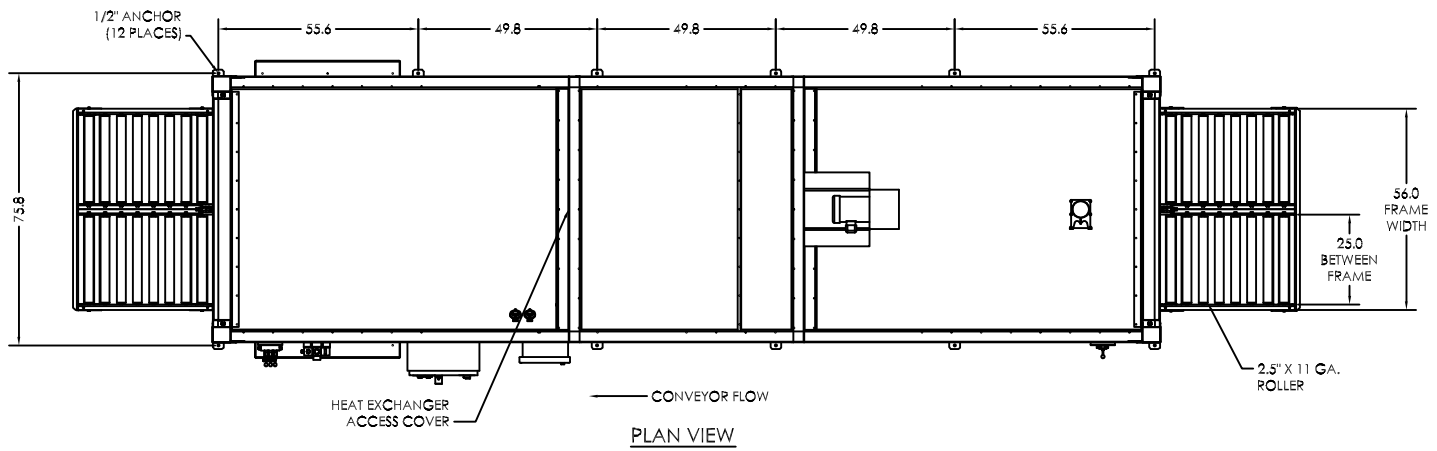
- 141 gallon capacity
- Sump drain, 1" NPT

Finish

- Standard: Blue or gray alkyd oil base paint
- Optional: Premium finish for corrosive environments

Additional Options

- 5" exhaust vent with damper
- A variety of powered and unpowered standard conveyors are available to move drums through processing.



1.) ELECTRIC DRUM HEATING CABINETS ARE NOT SUITABLE FOR USE IN HAZARDOUS AREAS AND SHOULD NEVER BE USED TO HEAT FLAMMABLE OR COMBUSTIBLE MATERIALS

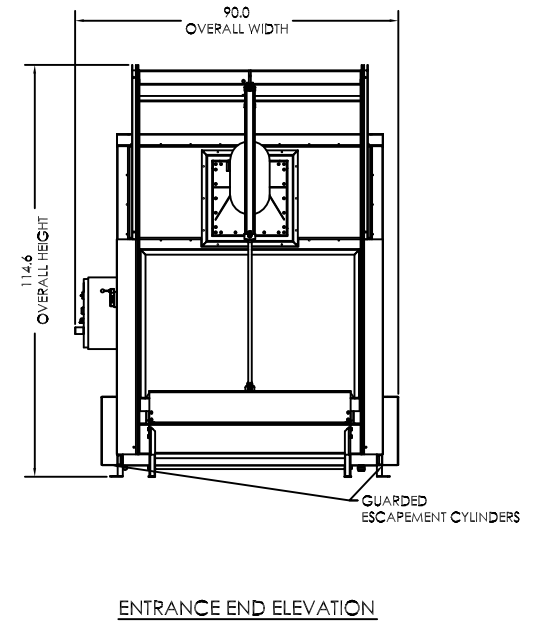
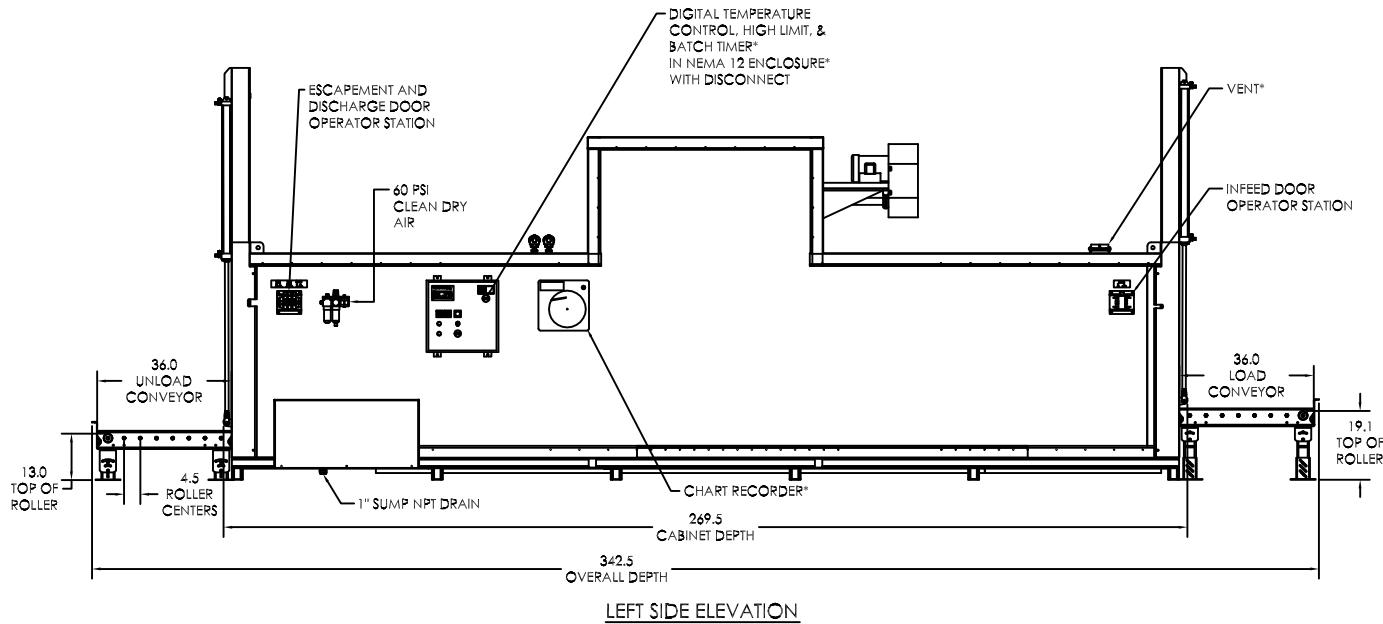
2.) CAPACITIES
 MAXIMUM TEMPERATURE: 300°F
 DRUM CAPACITY: (20) 55 GAL DRUMS @ 675 LBS. PER DRUM
 HEAT CAPACITY: 36 KW
 CIRCULATING FAN: 3500 CFM, 2 HP
 SPILL CONTAINMENT SUMP: 141 GAL

3.) UTILITY REQUIREMENTS
 ELECTRIC: 480/3/60*
 COMPRESSED AIR: 60 PSI

4.) MATERIALS OF CONSTRUCTION
 INTERIOR COVERS: 16 GA. ALUMINIZED
 EXTERIOR COVERS: 18 GA. COLD ROLLED
 CONVEYOR RAILS: 8 GA. COLD ROLLED
 BASE: C3@4.1# STRUCTURAL CHANNEL
 INSULATION: 3" x 6# DENSITY MINERAL WOOL

*DESIGNATES OPTIONAL FEATURE

CONSULT FACTORY FOR ADDITIONAL OPTIONS NOT SHOWN



MODEL: ET20
 DESCRIPTION: DRUM HEATING TUNNEL
 DRAWING: ET20 SALES

THIS DRAWING IS CONFIDENTIAL AND MUST NOT BE COPIED, REPRODUCED OR USED FOR ANY PURPOSE WITHOUT THE WRITTEN CONSENT OF LEWCO, INC. ALL RIGHTS RESERVED

LEWCO, INC. IS COMMITTED TO CONTINUOUS IMPROVEMENT AND RESERVES THE RIGHT TO CHANGE DESIGNS AND SPECIFICATIONS WITHOUT NOTICE.

DATE 12/12/13
 REV 000
 PAGE 1 OF 1

