



- Each unit comes complete with a (3) year warranty and is fully assembled, wired, and tested

### Model: ST12 (12) Drum Heating Tunnel, Steam

LEWCO drum tunnels provide a means to heat individual drums that are not palletized, while also accommodating "first-in, first-out" product flow. These models also offer the potential for automated drum handling and integration into other processes. All models feature our signature all-welded steel, heavy-duty construction and simple, user-friendly controls.

#### Capacity

- (12) 55 gallon drums
- 675 lbs. per drum

#### Construction/ Features

- All welded, 1/8" steel shell
- Insulation: 3" x 6# mineral wool
- Heavy-duty, rigid frame construction and a top mounted heater box saves floor space and provide high convection airflow for faster heat-up times.
- Pneumatic guillotine doors on both ends.

#### Conveyor

- Gravity roller conveyor set on incline to efficiently convey drums through tunnel.
- 2 1/2" diameter x 11 ga. rollers with sealed bearings on 4 1/2" roller centers.
- Proprietary escapement device allows discharge of (1) drum at a time.

#### Heating Medium

- Steam, 5-200 PSIG

#### Heat Exchanger

- 124,000 BTU's per hour at 150 PSIG

#### Control Options

- Electronic process and redundant high-limit controllers with modulating control valve housed in a IP65 enclosure with full voltage lockable disconnect
- Non-electronic, self-acting temperature controller, limited to 150 psig, available in the following ranges:
  - 125°-212°F, 1/2" valve
  - 158°-300°F, 1/2" valve

#### Circulation Fan

- Standard: 3,500 CFM, TEFC motor with motor starter
- Optional: 3,500 CFM, explosion-proof motor with motor starter

#### Quality Assurance

#### Utility Requirements

- Compressed Air: 60 PSI
- Electric: 480/3/60
- Optional voltages available

#### Spill Containment

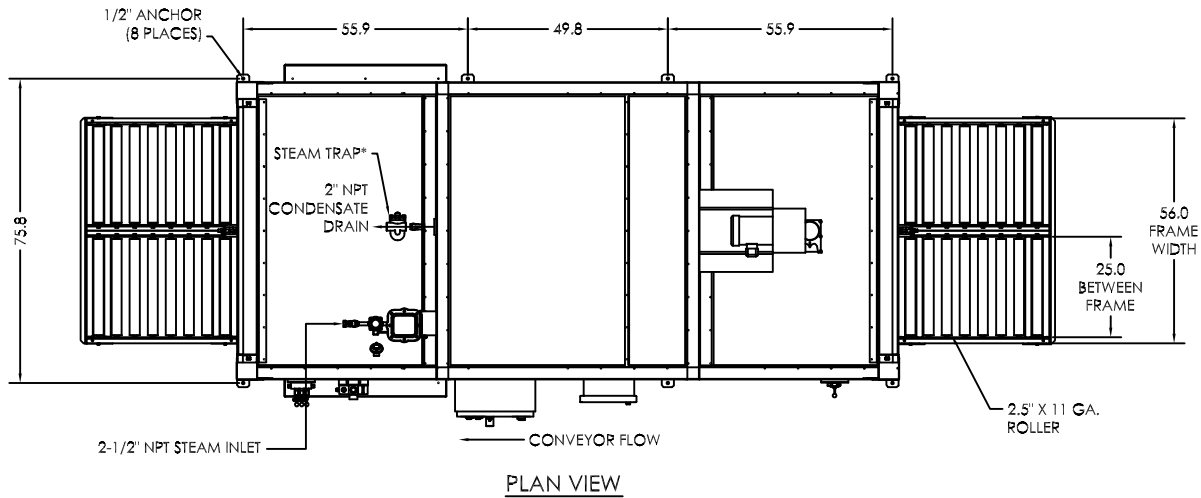
- 81 gallon capacity
- Sump drain, 1" NPT

#### Finish

- Standard: Blue or gray alkyd oil base paint
- Optional: Premium finish for corrosive environments

#### Additional Options

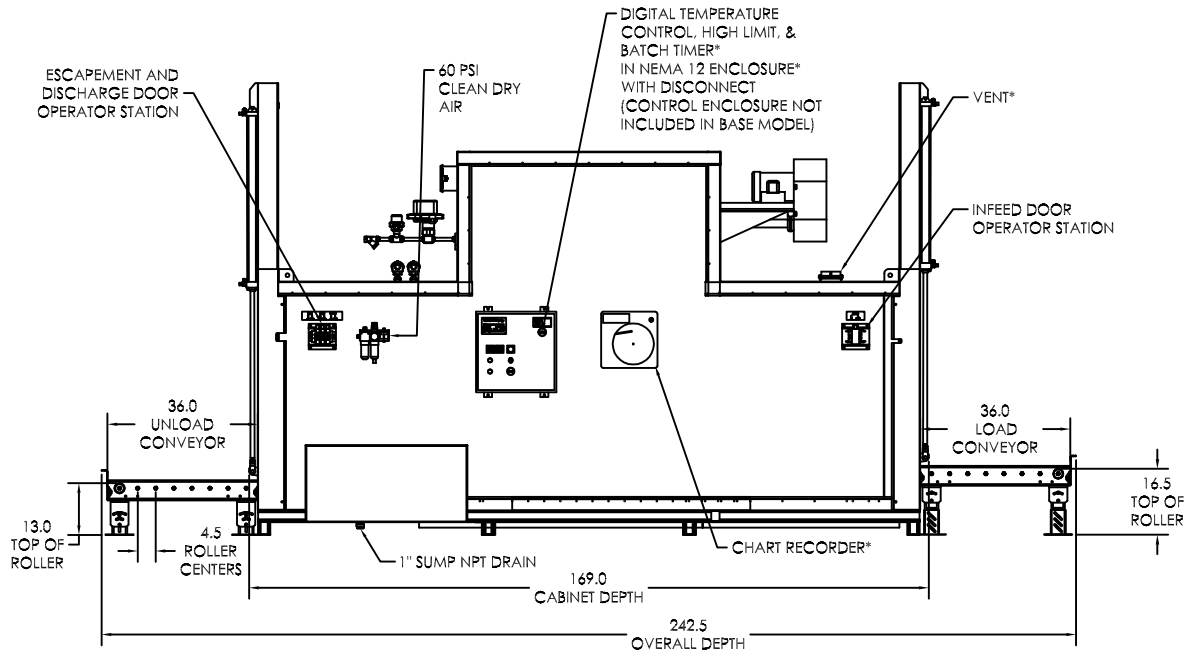
- Steam trap
- 5" exhaust vent with damper
- A variety of powered and unpowered standard conveyors are available to move drums through processing.



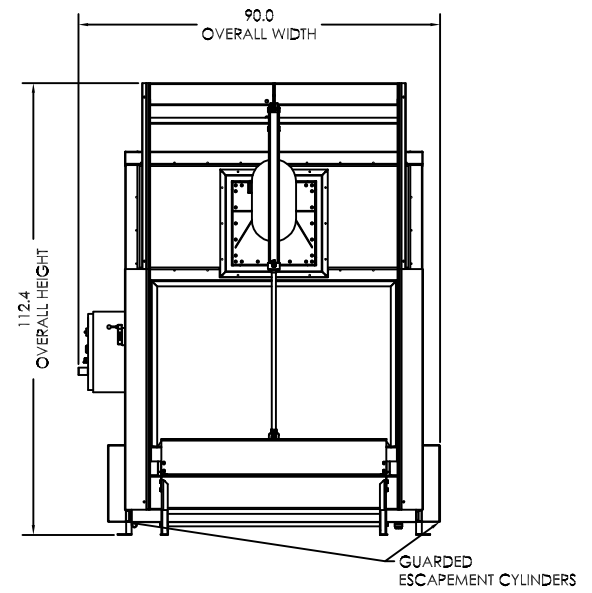
PLAN VIEW

- 1.) CAPACITIES  
 MAXIMUM TEMPERATURE: 300°F  
 DRUM CAPACITY: (12) 55 GAL DRUMS @ 675 LBS. PER DRUM  
 HEAT CAPACITY: 124,000 BTU/HR  
 CIRCULATING FAN: 3500 CFM, 2 HP  
 SPILL CONTAINMENT SUMP: 81 GAL
- 2.) UTILITY REQUIREMENTS  
 ELECTRIC: 480/3/60\*  
 COMPRESSED AIR: 60 PSI  
 HEAT EXCHANGER PRESSURE RATING: 150 PSIG @ 366°F
- 3.) MATERIALS OF CONSTRUCTION  
 INTERIOR COVERS: 16 GA. ALUMINIZED  
 EXTERIOR COVERS: 18 GA. COLD ROLLED  
 CONVEYOR RAILS: 8 GA. COLD ROLLED  
 BASE: C3@4.1# STRUCTURAL CHANNEL  
 INSULATION: 3" x 6# DENSITY MINERAL WOOL

\*DESIGNATES OPTIONAL FEATURE  
 CONSULT FACTORY FOR ADDITIONAL OPTIONS NOT SHOWN



LEFT SIDE ELEVATION



ENTRANCE END ELEVATION

MODEL:	ST12	THIS DRAWING IS CONFIDENTIAL AND MUST NOT BE COPIED, REPRODUCED OR USED FOR ANY PURPOSE WITHOUT THE WRITTEN CONSENT OF LEWCO, INC. ALL RIGHTS RESERVED	DATE	12/12/13
DESCRIPTION:	DRUM HEATING TUNNEL		REV	000
DRAWING:	ST12 SALES		PAGE	1 OF 1



LEWCO, INC. IS COMMITTED TO CONTINUOUS IMPROVEMENT AND RESERVES THE RIGHT TO CHANGE DESIGNS AND SPECIFICATIONS WITHOUT NOTICE.